



**G · A · B · B · S**

geospatial data analysis building blocks

# Upload, Configure, Analyze, and Share Geospatial Data in 3 Minutes

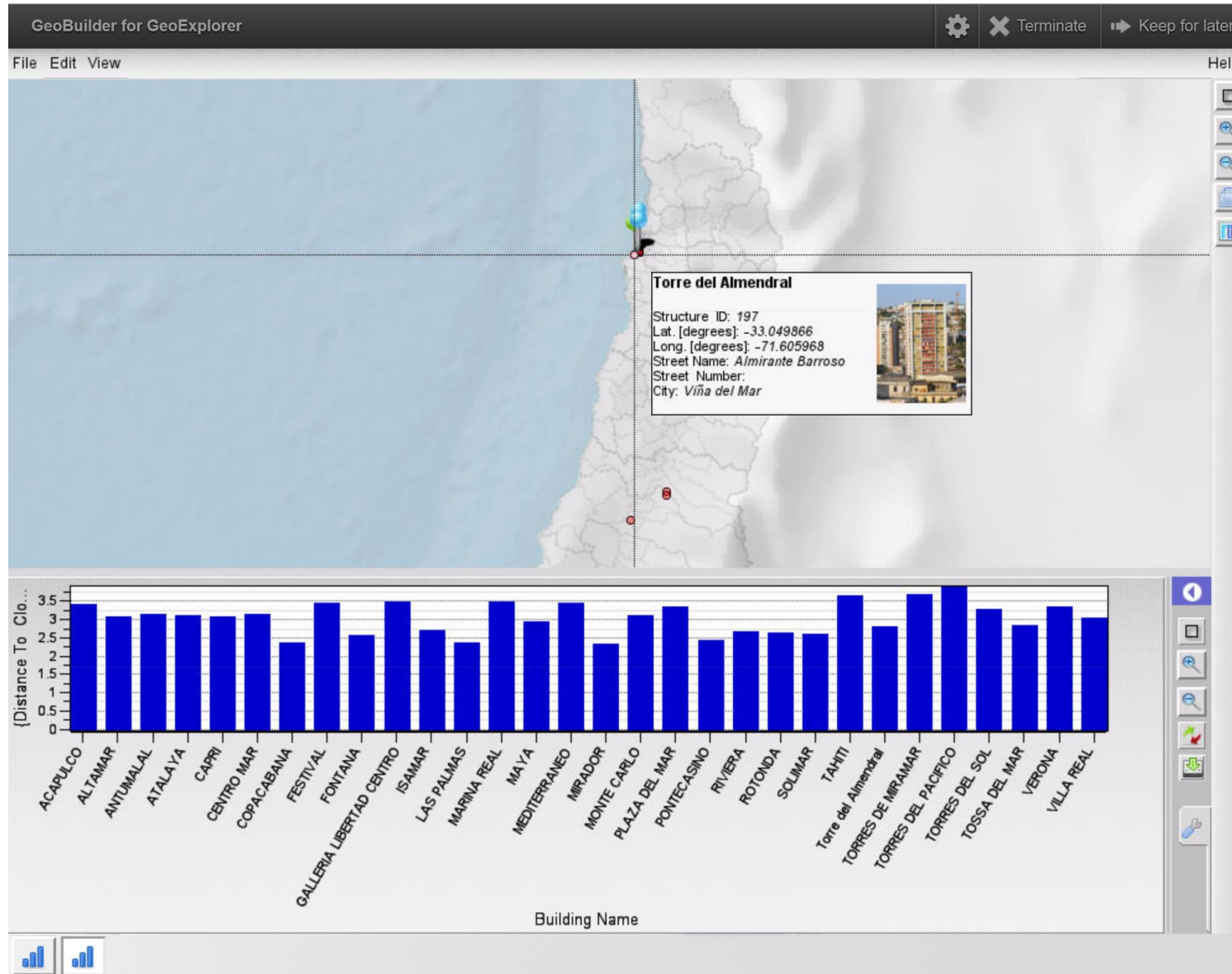
Hou-Jen Ko

# Goals & Impact

- Make it easy to create geospatial data as a tool
  - No programming
  - Show and navigate the data on the map
  - Support charts and graphs
- Fast to share the research results
  - Broadening participation
  - Everyone can create and share an interactive tool on the web
- Self-service, open source, and community driven



# Example



# Features

- Make it easy to create and share geospatial data
  - Navigate on a map interactively
  - Draw various graphs while selecting Geo-stations
- Easy to setup
  - GUI to setup the interactive map from CSV files
- Easy to share
  - Store data on the iData



- Storage for your geospatial data on the web
- Upload / download data
- Setup access permission

*iData* Share, Browse, and Discover

Contents of: [Datasets :: Geobuilder-viewer-config / demo3](#)

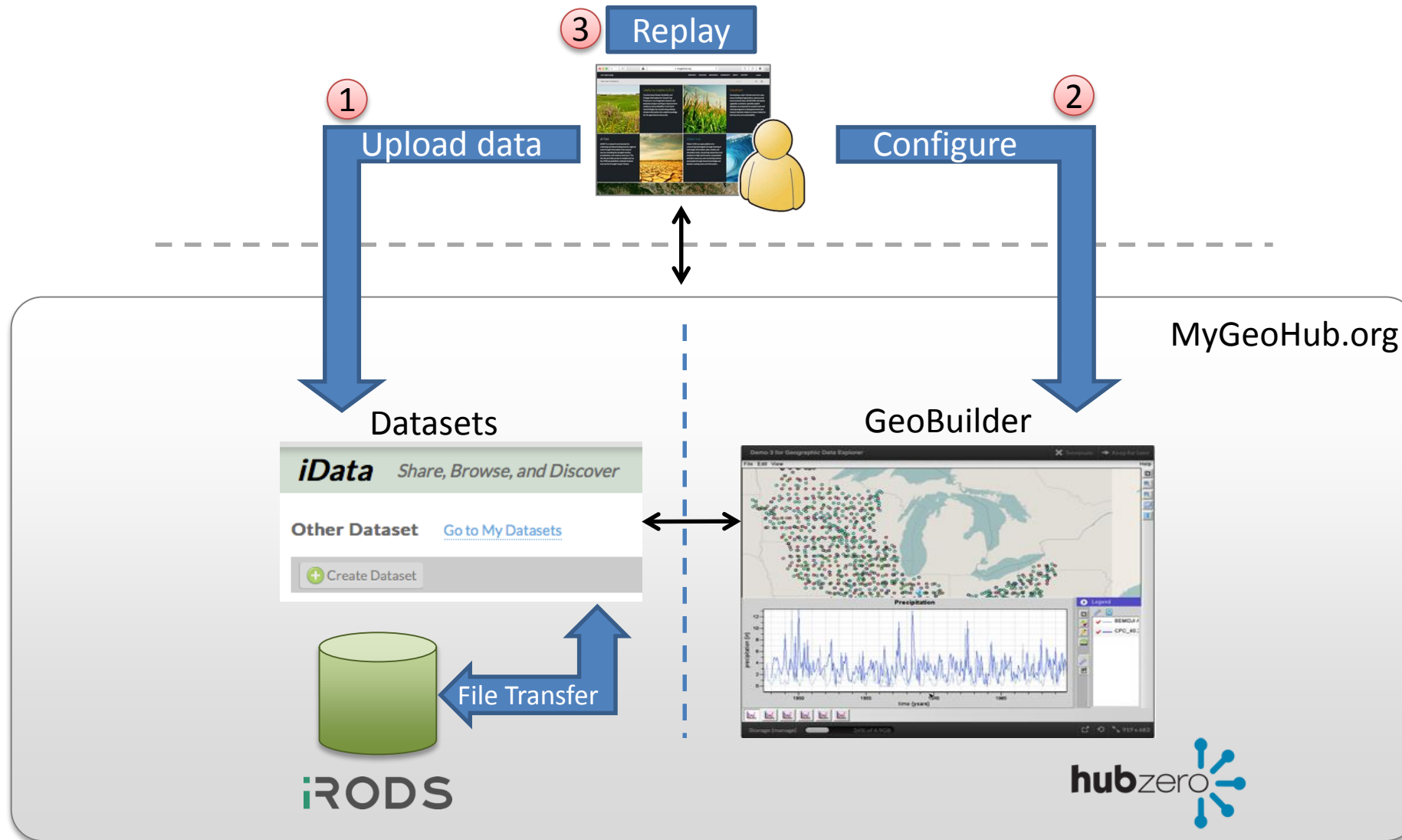
Parent Folder Refresh Create Folder Upload Download Delete Preview

Datasets	
Geobuilder-viewer-config	
Indiana Stream Flow...	
Manual Shaded Relief...	
Wind	
demo1	
demo2	
demo3	
cpc_evaporation...	

<input type="checkbox"/>	Name ^	Size
<input type="checkbox"/>	cpc_evaporation	
<input type="checkbox"/>	cpc_moisture	
<input type="checkbox"/>	cpc_potential_evaporation	
<input type="checkbox"/>	cpc_precipitation	
<input type="checkbox"/>	config.gbc	470 B
<input type="checkbox"/>	cpc_station.csv	13.61 KB

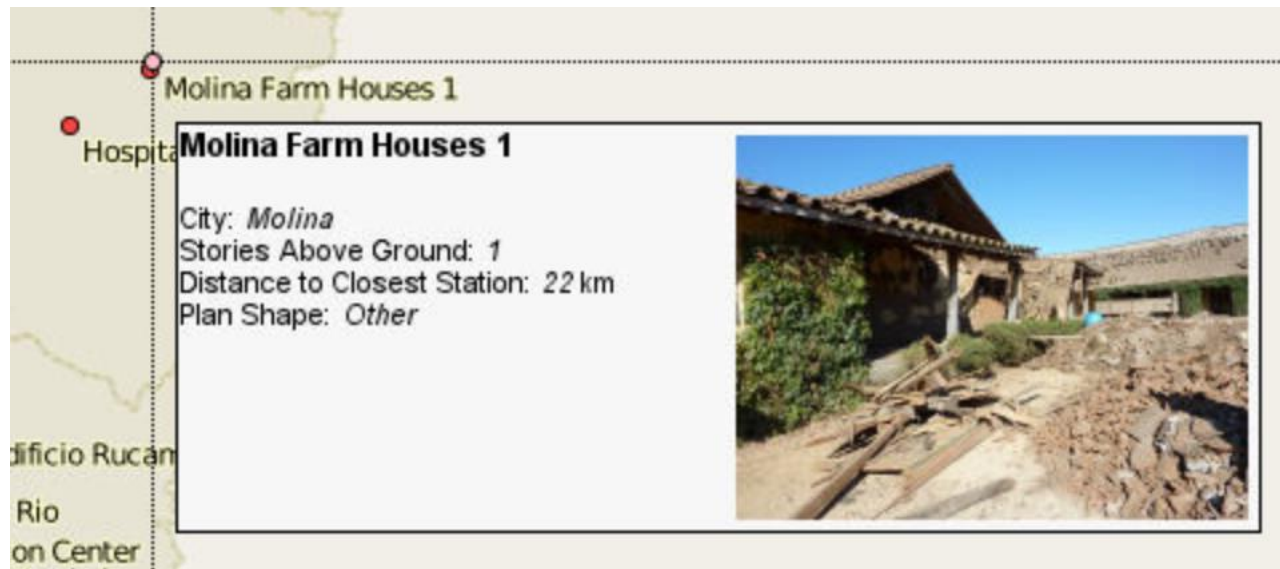


# How it works



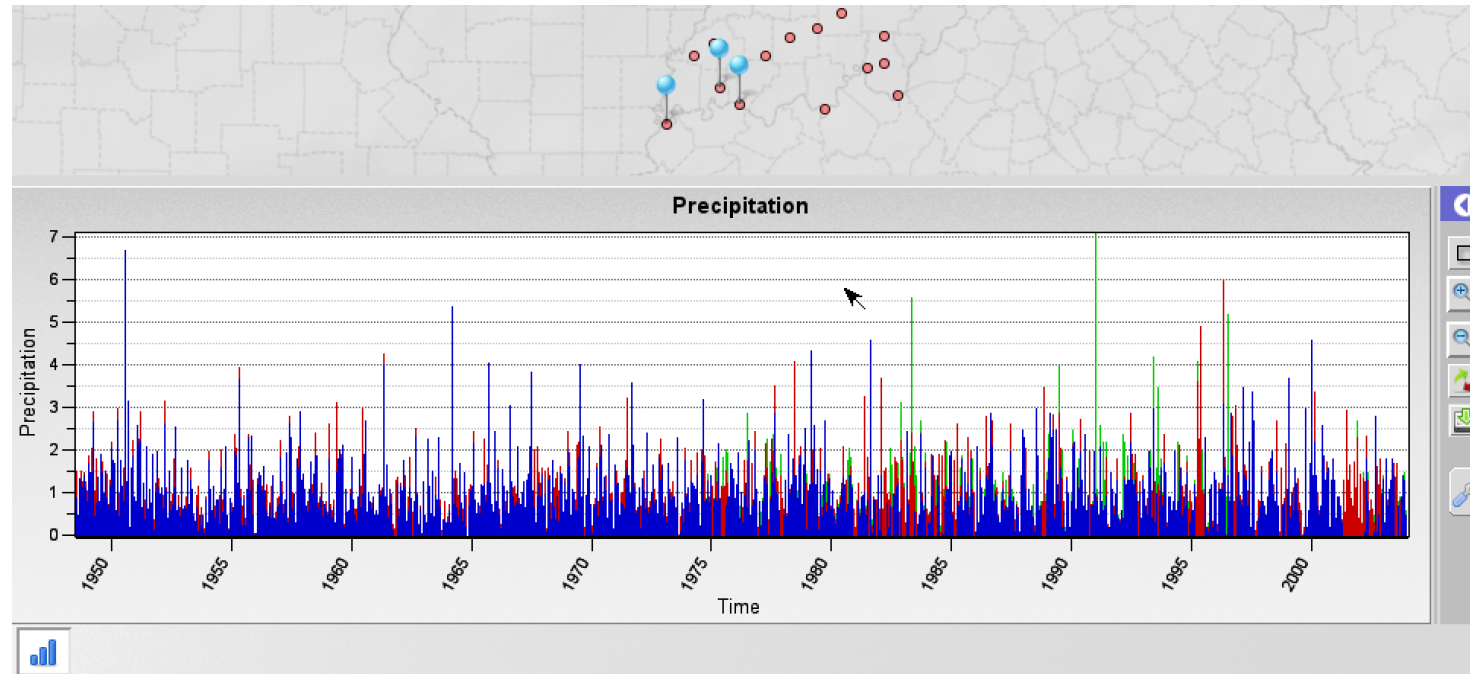
# Features

- Choose geospatial CSV table from iData
  - Geo-position: latitude, longitude
  - Attributes: name, data, and etc.
  - Pictures



# Features

- Support multiple geospatial data (CSV files) maps to a single GeoStation
  - Plot various charts while selecting them






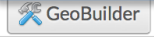
# Save and replay a configuration file

- Once the setup procedure is done, save the configuration file to iData
- Replay and share the tool through iData
- Direct Link: [click me](#)

*iData* Share, Browse, and Discover

Contents of: [Datasets :: Geobuilder-viewer-config: / demo3](#) [Search For Files](#)

Parent Folder Refresh Create Folder Upload Download Delete Preview

<input type="checkbox"/>	Name ^	Size	Created	Modified	Tools
<input type="checkbox"/>	Folder cpc_evaporation		4/8/2015 9:40 PM	4/8/2015 9:40 PM	
<input type="checkbox"/>	Folder cpc_moisture		4/8/2015 9:36 PM	4/8/2015 9:36 PM	
<input type="checkbox"/>	Folder cpc_potential_evaporation		4/8/2015 9:46 PM	4/8/2015 9:46 PM	
<input type="checkbox"/>	Folder cpc_precipitation		4/8/2015 9:32 PM	4/8/2015 9:32 PM	
<input type="checkbox"/>	File <a href="#">config.gbc</a>	470 B	5/18/2015 6:55 PM	5/18/2015 6:55 PM	
<input type="checkbox"/>	File <a href="#">cpc_station.csv</a>	13.61 KB	4/15/2015 2:59 PM	4/15/2015 2:59 PM	

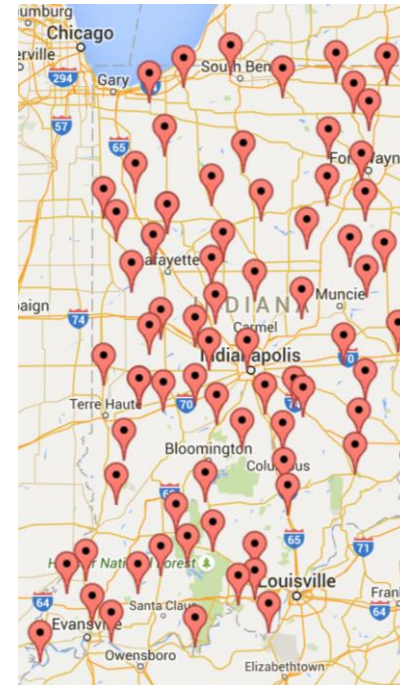
**Datasets**

- Geobuilder-viewer-config
  - Indiana Stream Flow...
  - Manual Shaded Relief...
  - Wind
  - demo1
  - demo2
  - demo3
    - cpc\_evaporation...
    - cpc\_moisture

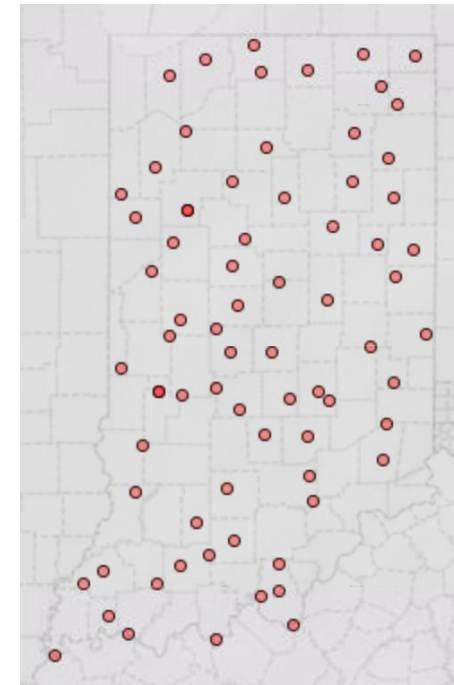


# Web-based vs GeoBuilder

- Web-based development
  - Take months to develop
  - MySQL, PHP, Javascript, and etc.
- GeoBuilder
  - a step-by-step wizard-style interface
  - No programming required



Web-based



GeoBuilder





**G · A · B · B · S**

geospatial data analysis building blocks

Demo