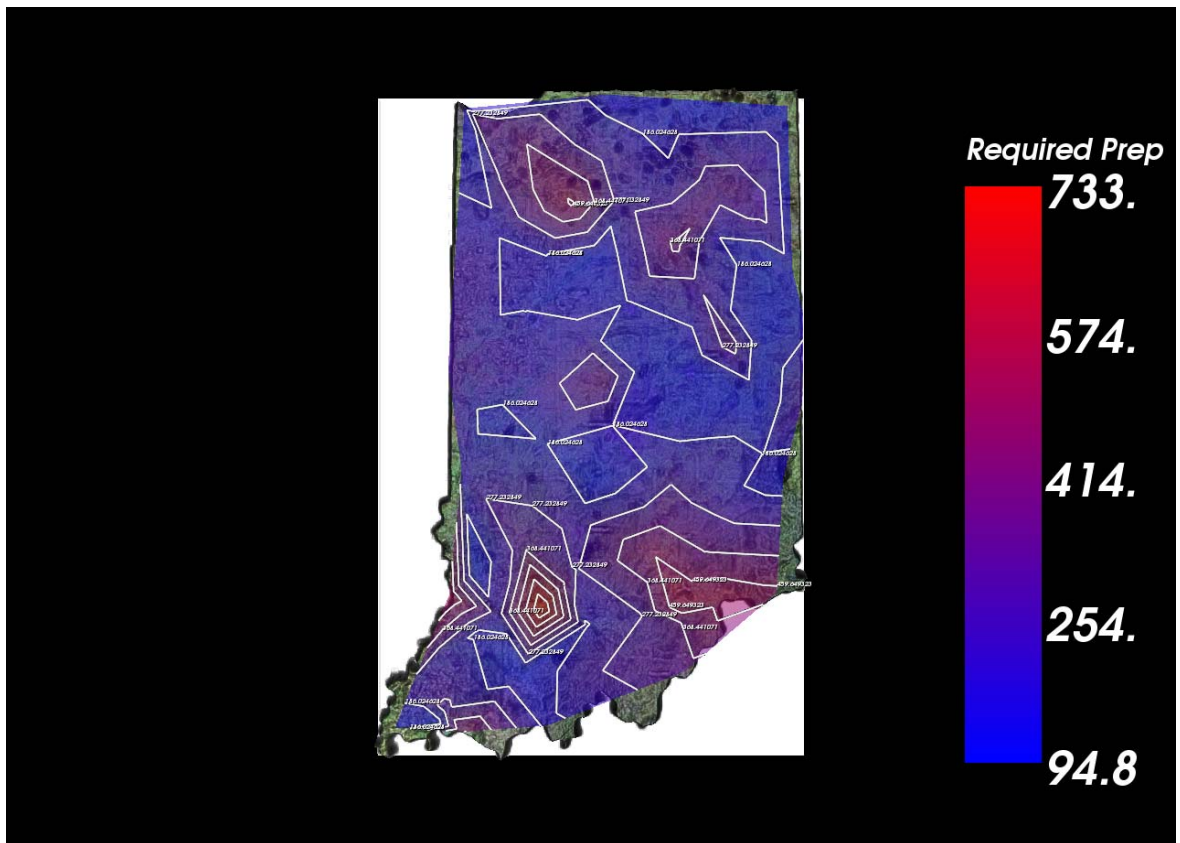
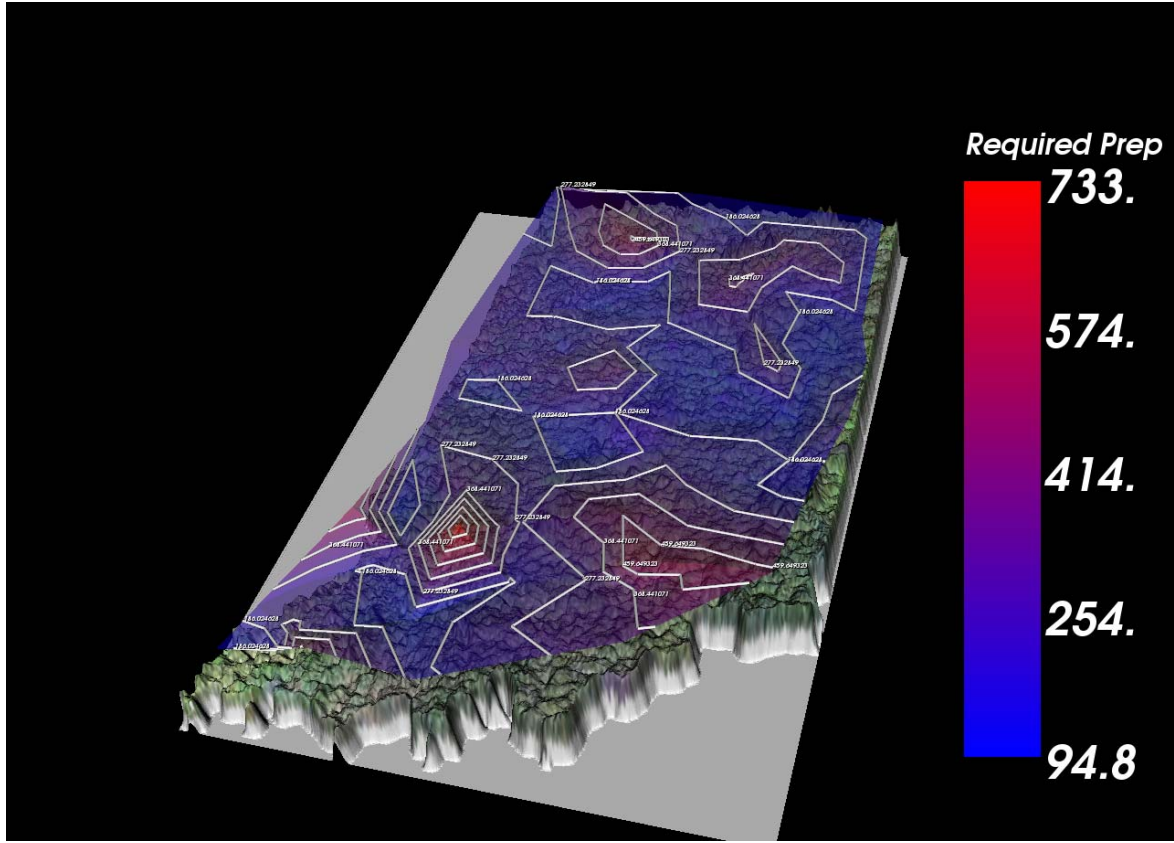


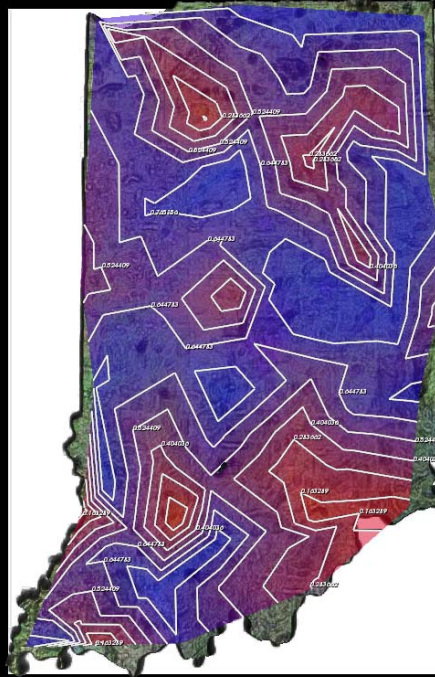
- Required precipitation to recover





As you can see, contour lines are visualized in 3D manner with the layer. This layer uses blue to red color map to distinguish the drought area. You can also easily get sense of the data where the region is required precipitation because isocontour lines are also visualized with different height so that higher lines need more precipitation.

- Probability to be drought



Recovery Prob.

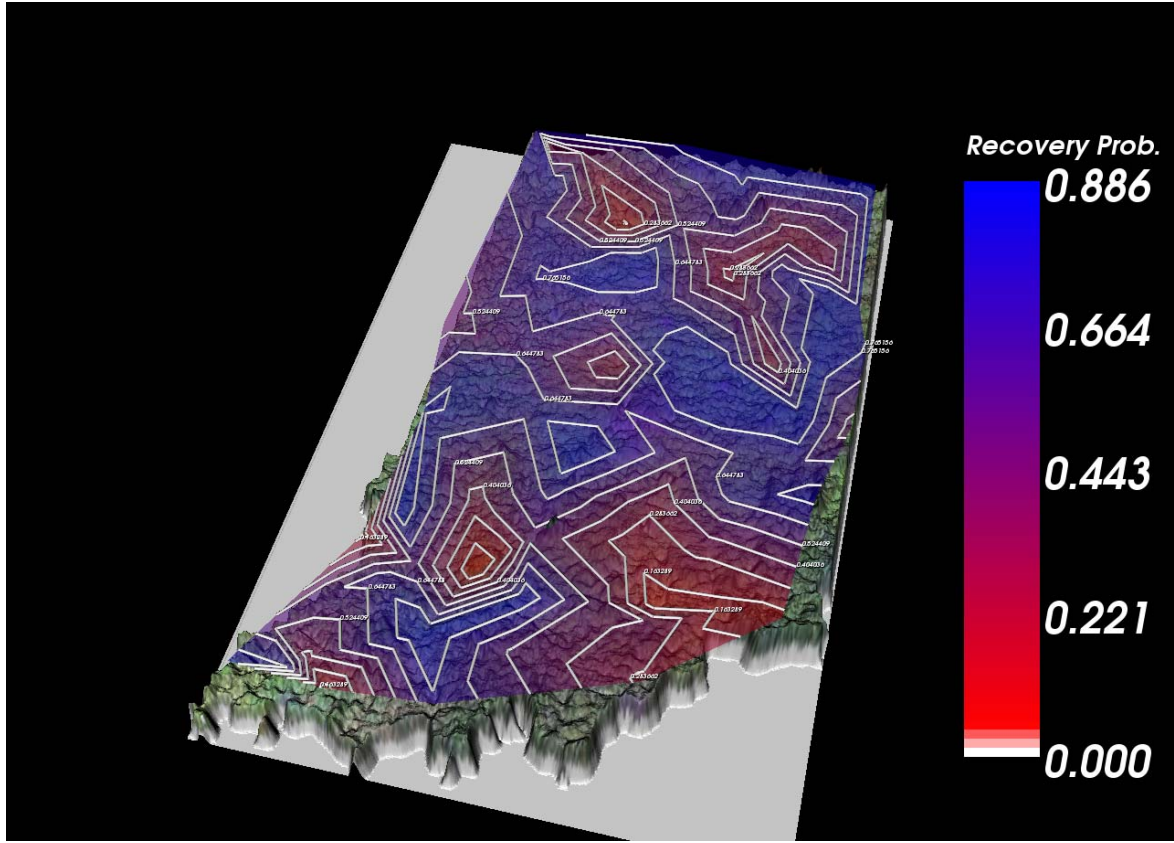
0.886

0.664

0.443

0.221

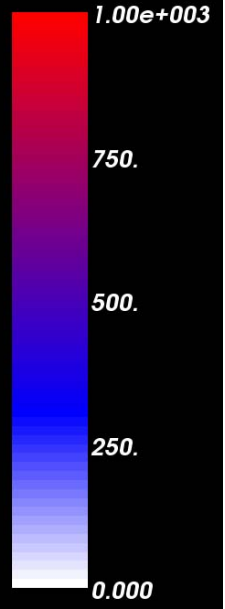
0.000

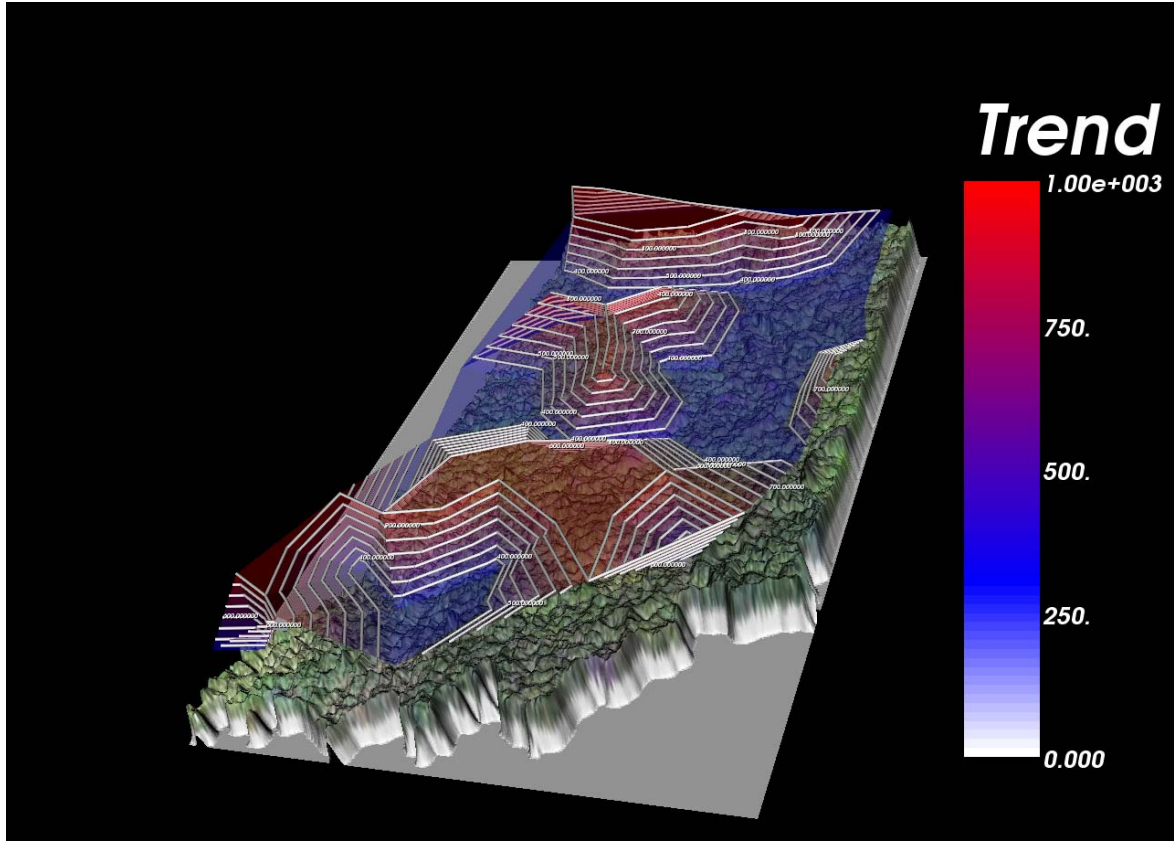


- Trend of required precipitation to recover



Trend





Trend of drought visualization is some what sparse than ones above. As I mentioned earlier, they are visualized using 5 different classes.

- Flash based Google Gadget

Personalize Your Homepage - Windows Internet Explorer

http://www.google.com/ig/add?module=hosting.modules.com/igadapters/104557830902434764531/flashgadget_drought2.xml

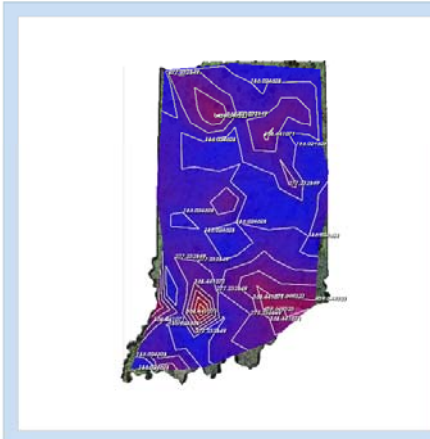
File Edit View Favorites Tools Help

Google Search

Personalize Your Homepage

iGoogle Add "Drought Visualization Flash Viewer" to your iGoogle page.

iGoogle is a more personal way to use Google.com. Customize your page anyway you like, by adding your favorite themes and gadgets from across the web.



Drought Visualization Flash Viewer
This is flash google gadget for drought visualization.

[Add to iGoogle](#)

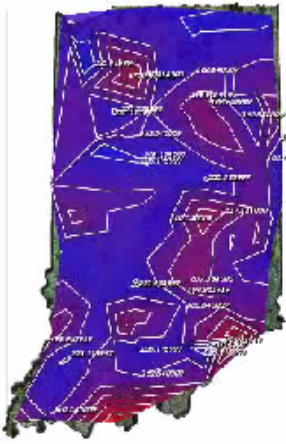
Items were made by a third party. Data or preferences you enter for these items are available to the site that maintains them.

Mobile · Advertising Programs · Business Solutions · Drive to Drive · Help · About Google

Done Internet 100%

Drought Visualization Flash Viewer

Drought Visualization Gadget



0:06 / 0:10

PURDUE UNIVERSITY